



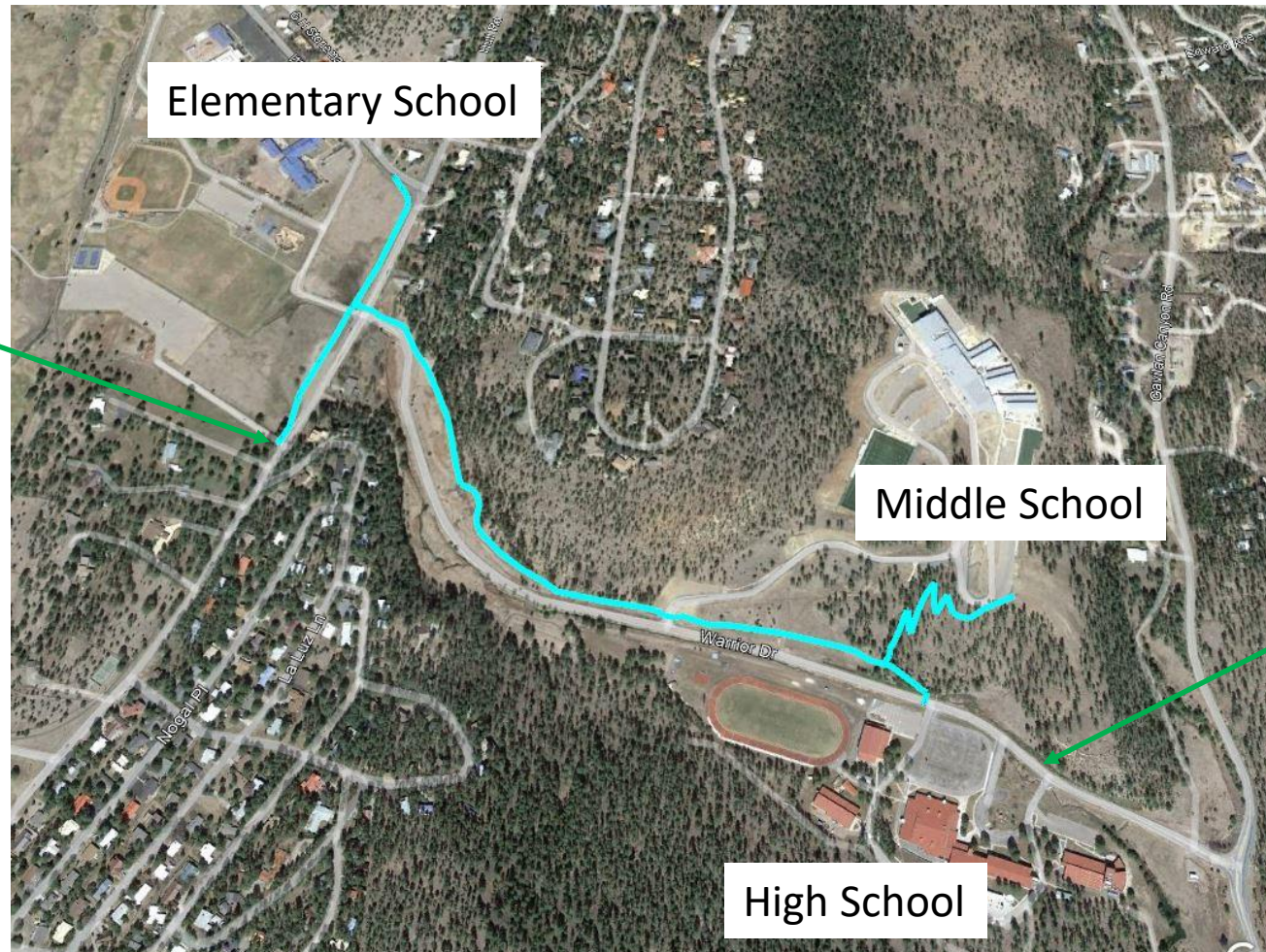
# Warrior Trail Ruidoso Municipal Schools

*Public Information Meeting*

*April 7, 2022*

# Vicinity Map

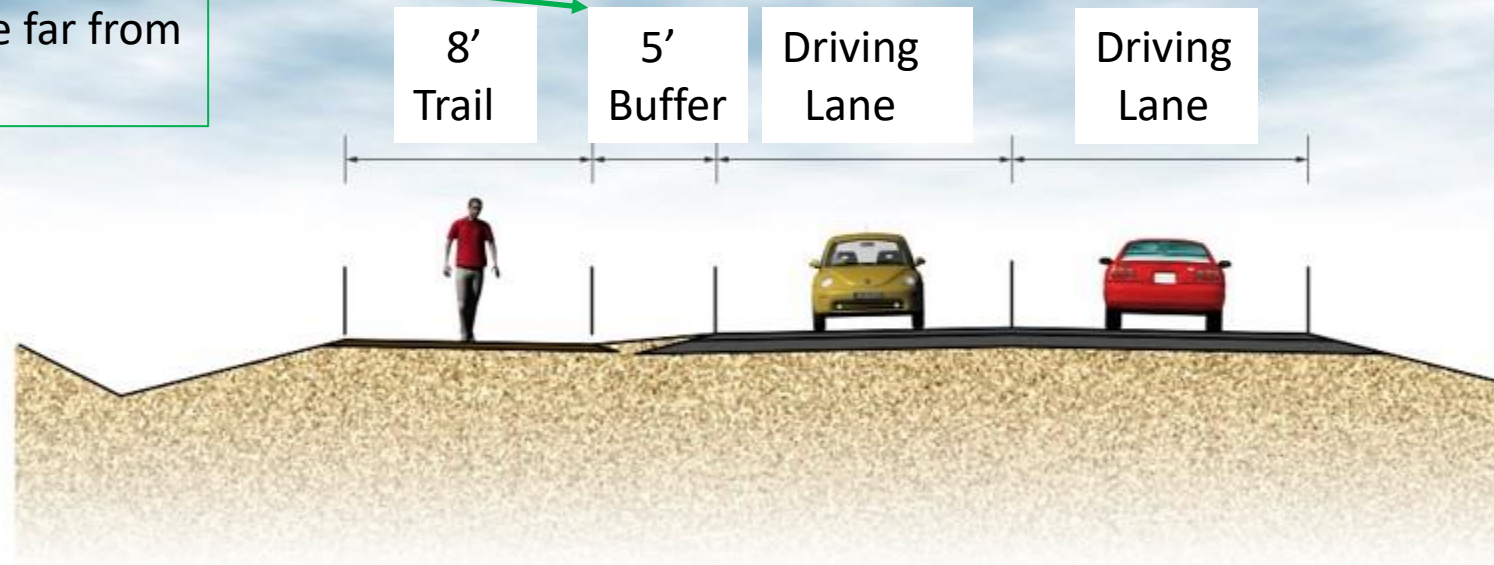
Hull Road



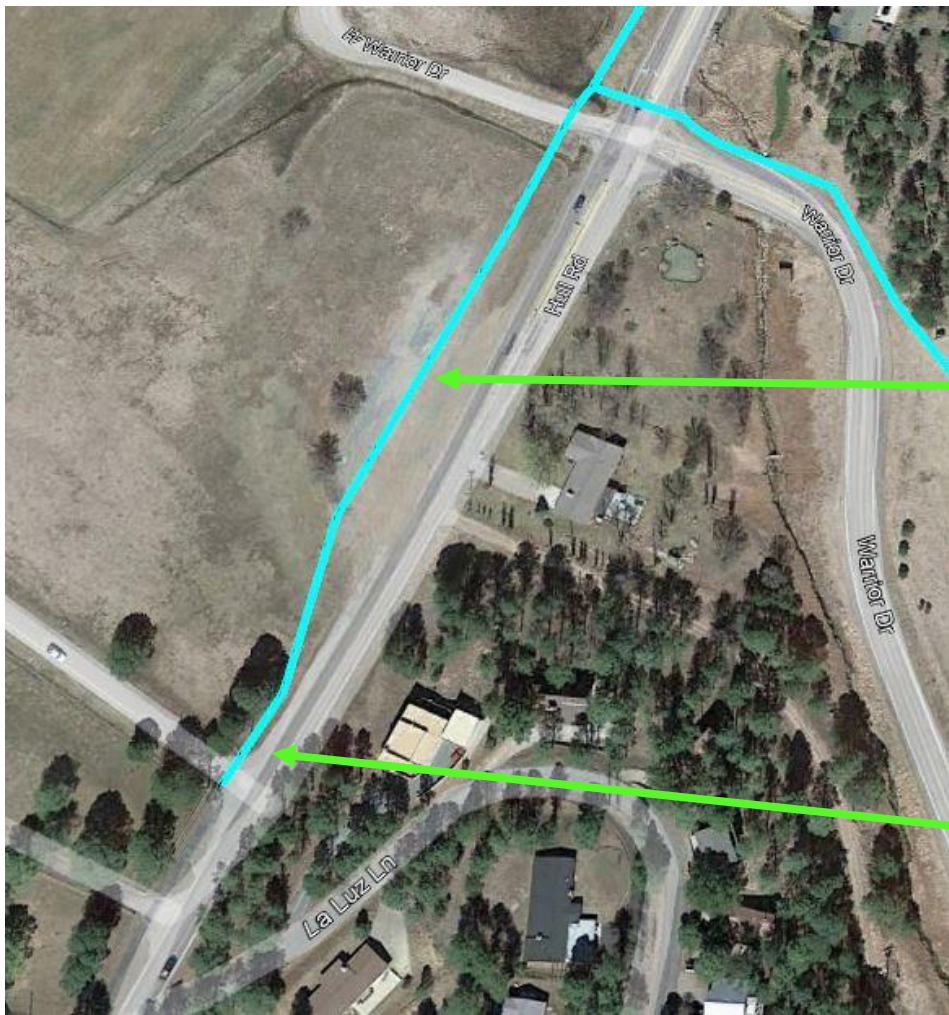
Warrior Drive

# Typical Trail Section

Minimum buffer from road  
Most areas will be far from  
The road.



# Hull Road to Warrior Drive

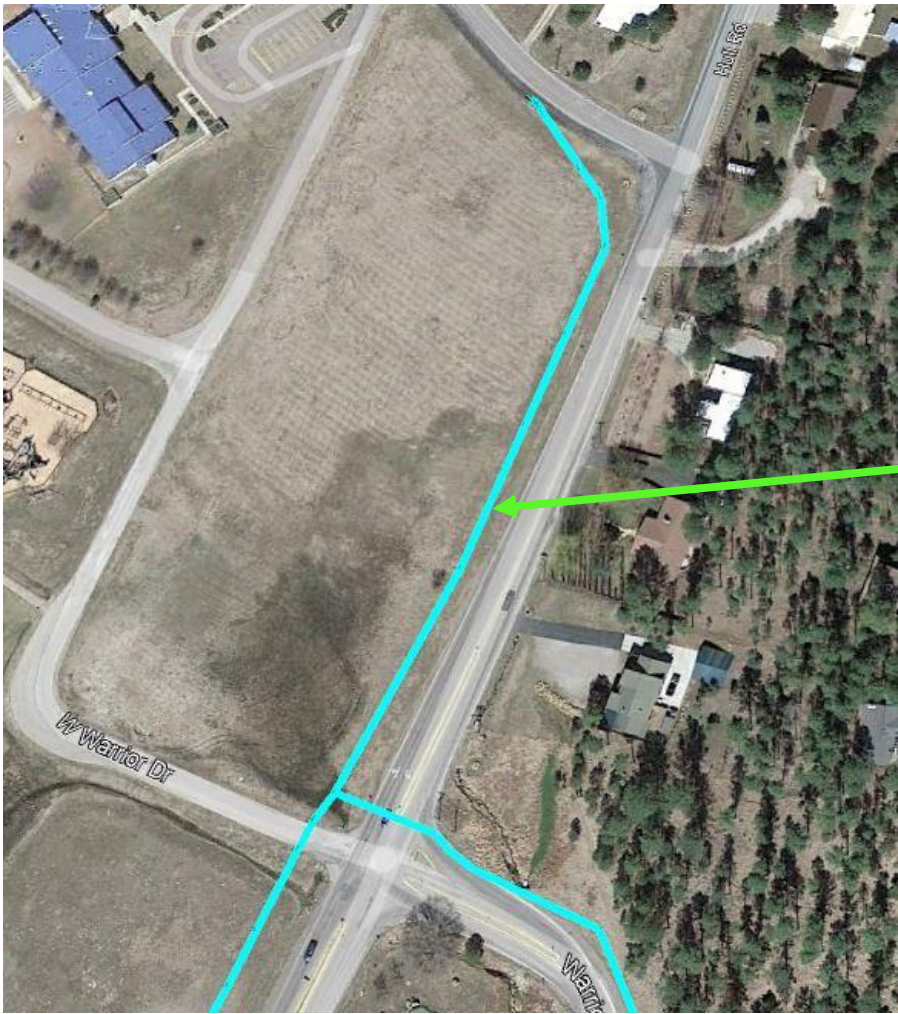


# Warrior Drive West Crossing

Example of a raised crosswalk.  
Trail will use a raised crosswalk to cross  
W. Warrior Drive.



# Warrior Drive to White Mountain Drive



# Hull Road to Middle School Entrance

Trail will follow existing foot path at base of hillside.



# Hull Road to Middle School Entrance

Pipe to be replaced by the Village of Ruidoso





# Hull Road to Middle School Entrance



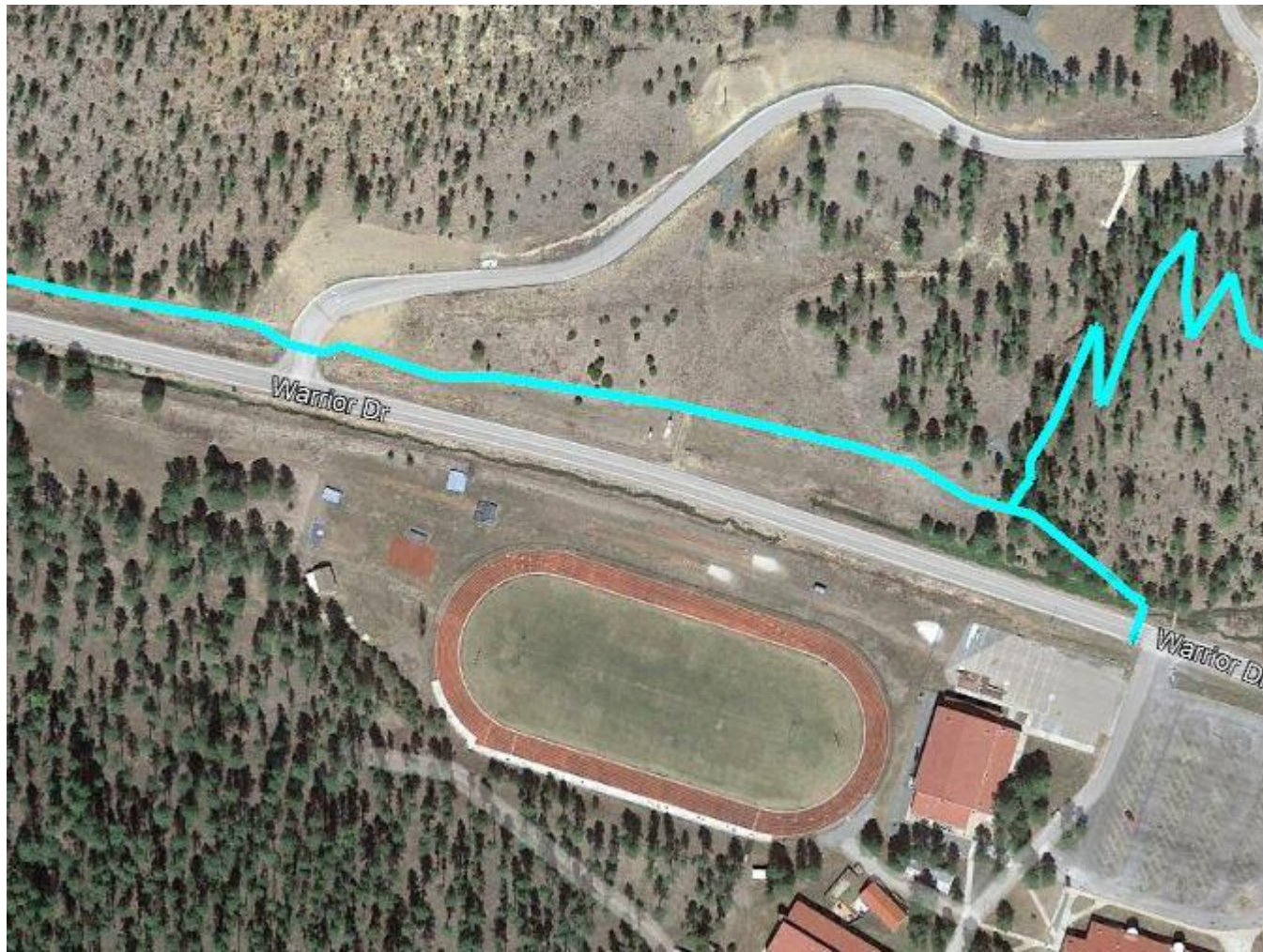
Right turn will have to stop at stop sign.

Median nose will be moved back to make room for a crosswalk.

# Hull Road to Middle School Entrance



# Middle School Entrance to High School Entrance



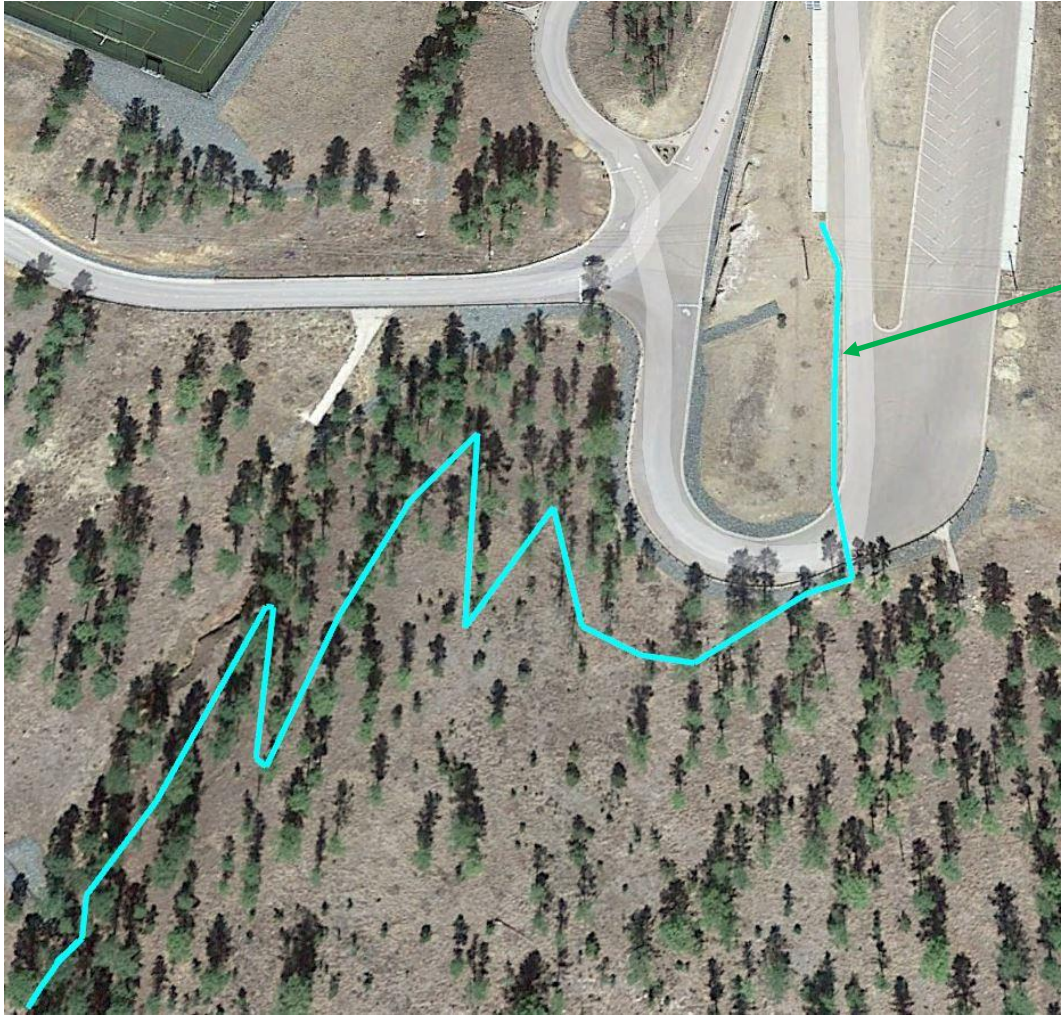
# Middle School Entrance to High School Entrance

Crosswalk to high school



Bridge will be replaced with a pipe

# Unpaved Trail to Middle School



Continue sidewalk in bus drop off parking lot.

# Unpaved Trail to Middle School



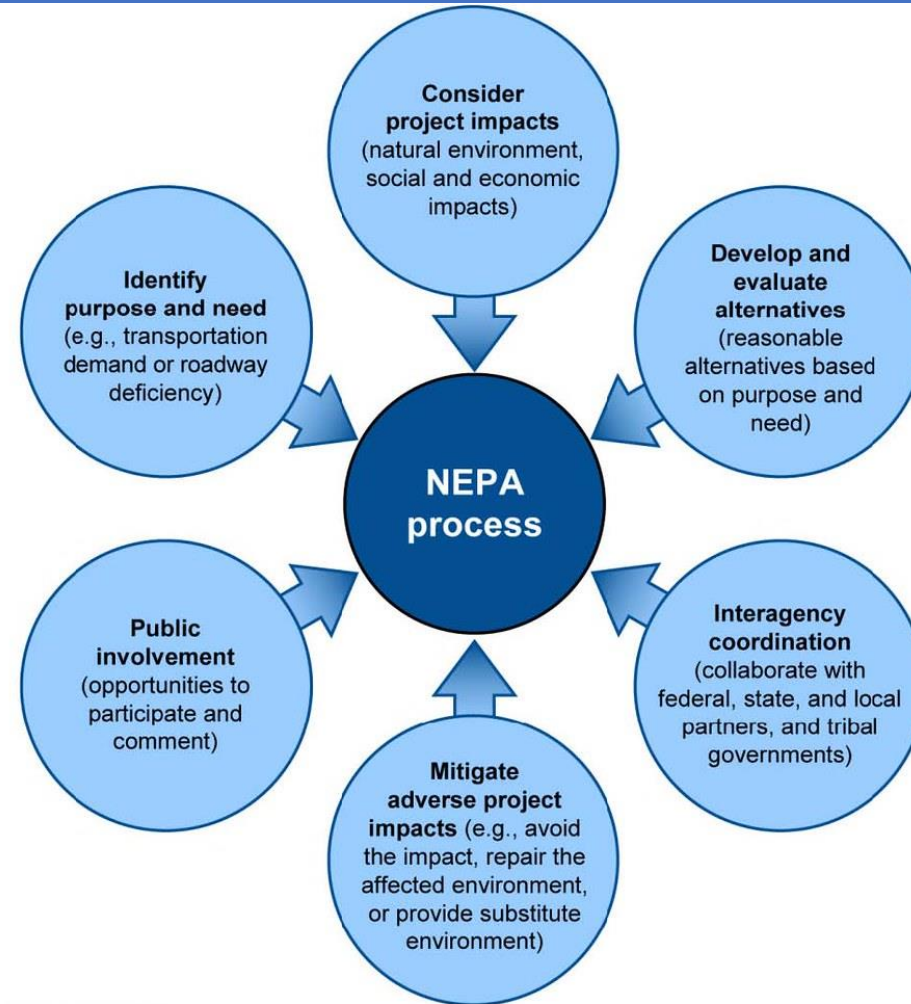
Section of guard rail  
will be removed.

# Schedule

Task	Date
Complete Design	Summer 2022
Complete Environmental Clearance	Summer 2022
NMDOT Funding Agreement	August 2022
Advertise for Construction Bids	Fall 2022

Project may be phased due to funding constraints. Highest priority is trail from end of Hull Road Trail to Middle School Entrance.

# Environmental Review Process



Source: GAO. | GAO-15-71



# Biologic and Cultural Survey

- Biological survey completed on December 21, 2021
  - 14 species of plants observed
  - 6 species of wildlife and/or their signs observed
- Cultural survey completed on December 13, 2021
  - 2 archaeological sites were updated Sites are not impacted by trail.
- Land uses includes the Ruidoso Middle & High School, White Mountain Recreational Complex, and an adjacent neighborhood
- The School District or Village owns the lands, and no private properties would be affected.

# Biologic & Cultural Assessment

- No floodplains would be impacted
- No critical habitat will be impacted
- No federal, state, or county listed species anticipated to be affected
- 7 potential wetland sites were identified and surveyed
  - Data sampling and documentation were completed, and reports are under preparation for submission to the Army Corps.
- No significant impacts to cultural resources or historic properties are anticipated
- Entire project area falls within developed and previously disturbed land.

# Project Documentation Status

- Biological Assessment under preparation
- Wetland reports under preparation
- Categorical Exclusion under preparation
- Cultural Resources Report under preparation
  
- Public meeting: 7 April 2022  
Email comments to: [jrichards@epsilonsystems.com](mailto:jrichards@epsilonsystems.com)  
Deadline for comments is 22 April 2022